

Average Daily Net Press Run For the Week Ended February 9, 1954 11,164

About Town

A meeting of the Assn. for the Home of Handicapped Children will be held tomorrow at 8 p. m. at the Connecticut Congregational Church, 45 Spruce St. The guest speaker will be Robert J. Anagnostis, speech teacher at Lakeside School, which is maintained by the State of Connecticut.

Green Stamps

The Cosmopolitan Club will meet Friday, Feb. 12, at 8:30, for its regular business meeting in Center Street. A special feature will be the presentation of Green Stamps. The meeting will be held in the room of the former Elizabeth Shelton of this town.

Court Cases

Driver Fined \$35 On Reckless Count
Frank G. Finney, 18, of East Hartford, was fined \$35 for reckless driving by Tom Court Judge John G. Rottier this morning. Finney was arrested Thursday night after a young woman hanging half out of the door of the moving car.

Women Set Date For Card Party

All four groups of the Women's League of the Second Congregational Church are combining on a large card party, the date of which was set for Thursday, Feb. 18, at a meeting of group leaders and members last evening.

Girls to Hold Tag Day for Heart Fund

Tomorrow will be Tag Day for the benefit of the Heart Fund and from 1 to 5 pretty high school girls from the four Y-Teen groups, which include Freshmen, sophomores, juniors and seniors, will be stationed along Main Street carrying the familiar red plastic hearts and asking for donations to the fund.

Handkerchiefs for Valentine Gifts

Dainty embroidered handkerchiefs in white and pastel shades. Also, get heart prints and lace edge.

Valentine Toiletries

YARDLEY BOND STREET COLOGNE SPECIAL \$1.25
LELONG STICK COLOGNE \$1.10
YARDLEY STICK COLOGNE \$1.50

Valentine Gifts

Handkerchiefs for Valentine Gifts
Dainty embroidered handkerchiefs in white and pastel shades. Also, get heart prints and lace edge.

Valentine Jewelry

Large assortment of pair earrings, necklaces, bracelets in sparkling, rhinestone, tailored and stone set jewelry.

Valentine Toiletries

YARDLEY BOND STREET COLOGNE SPECIAL \$1.25
LELONG STICK COLOGNE \$1.10
YARDLEY STICK COLOGNE \$1.50

Valentine Gifts

Handkerchiefs for Valentine Gifts
Dainty embroidered handkerchiefs in white and pastel shades. Also, get heart prints and lace edge.

Valentine Jewelry

Large assortment of pair earrings, necklaces, bracelets in sparkling, rhinestone, tailored and stone set jewelry.

Valentine Toiletries

YARDLEY BOND STREET COLOGNE SPECIAL \$1.25
LELONG STICK COLOGNE \$1.10
YARDLEY STICK COLOGNE \$1.50

Valentine Gifts

Handkerchiefs for Valentine Gifts
Dainty embroidered handkerchiefs in white and pastel shades. Also, get heart prints and lace edge.

Valentine Jewelry

Large assortment of pair earrings, necklaces, bracelets in sparkling, rhinestone, tailored and stone set jewelry.

Valentine Toiletries

YARDLEY BOND STREET COLOGNE SPECIAL \$1.25
LELONG STICK COLOGNE \$1.10
YARDLEY STICK COLOGNE \$1.50

Valentine Gifts

Handkerchiefs for Valentine Gifts
Dainty embroidered handkerchiefs in white and pastel shades. Also, get heart prints and lace edge.

Valentine Jewelry

Large assortment of pair earrings, necklaces, bracelets in sparkling, rhinestone, tailored and stone set jewelry.

Valentine Toiletries

YARDLEY BOND STREET COLOGNE SPECIAL \$1.25
LELONG STICK COLOGNE \$1.10
YARDLEY STICK COLOGNE \$1.50

Valentine Gifts

Handkerchiefs for Valentine Gifts
Dainty embroidered handkerchiefs in white and pastel shades. Also, get heart prints and lace edge.

When You Think of FABRICS Think of HALE'S
36 inch Fuller Printed Permanent Cottons 89c yd.
36 inch Fuller Printed Chambray \$1.19 yd.

When You Think of FABRICS Think of HALE'S
36 inch Fuller Printed Permanent Cottons 89c yd.
36 inch Fuller Printed Chambray \$1.19 yd.

When You Think of FABRICS Think of HALE'S
36 inch Fuller Printed Permanent Cottons 89c yd.
36 inch Fuller Printed Chambray \$1.19 yd.

When You Think of FABRICS Think of HALE'S
36 inch Fuller Printed Permanent Cottons 89c yd.
36 inch Fuller Printed Chambray \$1.19 yd.

When You Think of FABRICS Think of HALE'S
36 inch Fuller Printed Permanent Cottons 89c yd.
36 inch Fuller Printed Chambray \$1.19 yd.

When You Think of FABRICS Think of HALE'S
36 inch Fuller Printed Permanent Cottons 89c yd.
36 inch Fuller Printed Chambray \$1.19 yd.

When You Think of FABRICS Think of HALE'S
36 inch Fuller Printed Permanent Cottons 89c yd.
36 inch Fuller Printed Chambray \$1.19 yd.

When You Think of FABRICS Think of HALE'S
36 inch Fuller Printed Permanent Cottons 89c yd.
36 inch Fuller Printed Chambray \$1.19 yd.

When You Think of FABRICS Think of HALE'S
36 inch Fuller Printed Permanent Cottons 89c yd.
36 inch Fuller Printed Chambray \$1.19 yd.

When You Think of FABRICS Think of HALE'S
36 inch Fuller Printed Permanent Cottons 89c yd.
36 inch Fuller Printed Chambray \$1.19 yd.

When You Think of FABRICS Think of HALE'S
36 inch Fuller Printed Permanent Cottons 89c yd.
36 inch Fuller Printed Chambray \$1.19 yd.

When You Think of FABRICS Think of HALE'S
36 inch Fuller Printed Permanent Cottons 89c yd.
36 inch Fuller Printed Chambray \$1.19 yd.

When You Think of FABRICS Think of HALE'S
36 inch Fuller Printed Permanent Cottons 89c yd.
36 inch Fuller Printed Chambray \$1.19 yd.

When You Think of FABRICS Think of HALE'S
36 inch Fuller Printed Permanent Cottons 89c yd.
36 inch Fuller Printed Chambray \$1.19 yd.

When You Think of FABRICS Think of HALE'S
36 inch Fuller Printed Permanent Cottons 89c yd.
36 inch Fuller Printed Chambray \$1.19 yd.

When You Think of FABRICS Think of HALE'S
36 inch Fuller Printed Permanent Cottons 89c yd.
36 inch Fuller Printed Chambray \$1.19 yd.

When You Think of FABRICS Think of HALE'S
36 inch Fuller Printed Permanent Cottons 89c yd.
36 inch Fuller Printed Chambray \$1.19 yd.

When You Think of FABRICS Think of HALE'S
36 inch Fuller Printed Permanent Cottons 89c yd.
36 inch Fuller Printed Chambray \$1.19 yd.

When You Think of FABRICS Think of HALE'S
36 inch Fuller Printed Permanent Cottons 89c yd.
36 inch Fuller Printed Chambray \$1.19 yd.

When You Think of FABRICS Think of HALE'S
36 inch Fuller Printed Permanent Cottons 89c yd.
36 inch Fuller Printed Chambray \$1.19 yd.

When You Think of FABRICS Think of HALE'S
36 inch Fuller Printed Permanent Cottons 89c yd.
36 inch Fuller Printed Chambray \$1.19 yd.

When You Think of FABRICS Think of HALE'S
36 inch Fuller Printed Permanent Cottons 89c yd.
36 inch Fuller Printed Chambray \$1.19 yd.

When You Think of FABRICS Think of HALE'S
36 inch Fuller Printed Permanent Cottons 89c yd.
36 inch Fuller Printed Chambray \$1.19 yd.

When You Think of FABRICS Think of HALE'S
36 inch Fuller Printed Permanent Cottons 89c yd.
36 inch Fuller Printed Chambray \$1.19 yd.

When You Think of FABRICS Think of HALE'S
36 inch Fuller Printed Permanent Cottons 89c yd.
36 inch Fuller Printed Chambray \$1.19 yd.

When You Think of FABRICS Think of HALE'S
36 inch Fuller Printed Permanent Cottons 89c yd.
36 inch Fuller Printed Chambray \$1.19 yd.

When You Think of FABRICS Think of HALE'S
36 inch Fuller Printed Permanent Cottons 89c yd.
36 inch Fuller Printed Chambray \$1.19 yd.

When You Think of FABRICS Think of HALE'S
36 inch Fuller Printed Permanent Cottons 89c yd.
36 inch Fuller Printed Chambray \$1.19 yd.

When You Think of FABRICS Think of HALE'S
36 inch Fuller Printed Permanent Cottons 89c yd.
36 inch Fuller Printed Chambray \$1.19 yd.

When You Think of FABRICS Think of HALE'S
36 inch Fuller Printed Permanent Cottons 89c yd.
36 inch Fuller Printed Chambray \$1.19 yd.

When You Think of FABRICS Think of HALE'S
36 inch Fuller Printed Permanent Cottons 89c yd.
36 inch Fuller Printed Chambray \$1.19 yd.

When You Think of FABRICS Think of HALE'S
36 inch Fuller Printed Permanent Cottons 89c yd.
36 inch Fuller Printed Chambray \$1.19 yd.

When You Think of FABRICS Think of HALE'S
36 inch Fuller Printed Permanent Cottons 89c yd.
36 inch Fuller Printed Chambray \$1.19 yd.

When You Think of FABRICS Think of HALE'S
36 inch Fuller Printed Permanent Cottons 89c yd.
36 inch Fuller Printed Chambray \$1.19 yd.

When You Think of FABRICS Think of HALE'S
36 inch Fuller Printed Permanent Cottons 89c yd.
36 inch Fuller Printed Chambray \$1.19 yd.

When You Think of FABRICS Think of HALE'S
36 inch Fuller Printed Permanent Cottons 89c yd.
36 inch Fuller Printed Chambray \$1.19 yd.

When You Think of FABRICS Think of HALE'S
36 inch Fuller Printed Permanent Cottons 89c yd.
36 inch Fuller Printed Chambray \$1.19 yd.

When You Think of FABRICS Think of HALE'S
36 inch Fuller Printed Permanent Cottons 89c yd.
36 inch Fuller Printed Chambray \$1.19 yd.

When You Think of FABRICS Think of HALE'S
36 inch Fuller Printed Permanent Cottons 89c yd.
36 inch Fuller Printed Chambray \$1.19 yd.

When You Think of FABRICS Think of HALE'S
36 inch Fuller Printed Permanent Cottons 89c yd.
36 inch Fuller Printed Chambray \$1.19 yd.

When You Think of FABRICS Think of HALE'S
36 inch Fuller Printed Permanent Cottons 89c yd.
36 inch Fuller Printed Chambray \$1.19 yd.

When You Think of FABRICS Think of HALE'S
36 inch Fuller Printed Permanent Cottons 89c yd.
36 inch Fuller Printed Chambray \$1.19 yd.

When You Think of FABRICS Think of HALE'S
36 inch Fuller Printed Permanent Cottons 89c yd.
36 inch Fuller Printed Chambray \$1.19 yd.

When You Think of FABRICS Think of HALE'S
36 inch Fuller Printed Permanent Cottons 89c yd.
36 inch Fuller Printed Chambray \$1.19 yd.

When You Think of FABRICS Think of HALE'S
36 inch Fuller Printed Permanent Cottons 89c yd.
36 inch Fuller Printed Chambray \$1.19 yd.

When You Think of FABRICS Think of HALE'S
36 inch Fuller Printed Permanent Cottons 89c yd.
36 inch Fuller Printed Chambray \$1.19 yd.

When You Think of FABRICS Think of HALE'S
36 inch Fuller Printed Permanent Cottons 89c yd.
36 inch Fuller Printed Chambray \$1.19 yd.

When You Think of FABRICS Think of HALE'S
36 inch Fuller Printed Permanent Cottons 89c yd.
36 inch Fuller Printed Chambray \$1.19 yd.

When You Think of FABRICS Think of HALE'S
36 inch Fuller Printed Permanent Cottons 89c yd.
36 inch Fuller Printed Chambray \$1.19 yd.

When You Think of FABRICS Think of HALE'S
36 inch Fuller Printed Permanent Cottons 89c yd.
36 inch Fuller Printed Chambray \$1.19 yd.

When You Think of FABRICS Think of HALE'S
36 inch Fuller Printed Permanent Cottons 89c yd.
36 inch Fuller Printed Chambray \$1.19 yd.

When You Think of FABRICS Think of HALE'S
36 inch Fuller Printed Permanent Cottons 89c yd.
36 inch Fuller Printed Chambray \$1.19 yd.

When You Think of FABRICS Think of HALE'S
36 inch Fuller Printed Permanent Cottons 89c yd.
36 inch Fuller Printed Chambray \$1.19 yd.

When You Think of FABRICS Think of HALE'S
36 inch Fuller Printed Permanent Cottons 89c yd.
36 inch Fuller Printed Chambray \$1.19 yd.

When You Think of FABRICS Think of HALE'S
36 inch Fuller Printed Permanent Cottons 89c yd.
36 inch Fuller Printed Chambray \$1.19 yd.

When You Think of FABRICS Think of HALE'S
36 inch Fuller Printed Permanent Cottons 89c yd.
36 inch Fuller Printed Chambray \$1.19 yd.

When You Think of FABRICS Think of HALE'S
36 inch Fuller Printed Permanent Cottons 89c yd.
36 inch Fuller Printed Chambray \$1.19 yd.

When You Think of FABRICS Think of HALE'S
36 inch Fuller Printed Permanent Cottons 89c yd.
36 inch Fuller Printed Chambray \$1.19 yd.

When You Think of FABRICS Think of HALE'S
36 inch Fuller Printed Permanent Cottons 89c yd.
36 inch Fuller Printed Chambray \$1.19 yd.

When You Think of FABRICS Think of HALE'S
36 inch Fuller Printed Permanent Cottons 89c yd.
36 inch Fuller Printed Chambray \$1.19 yd.

When You Think of FABRICS Think of HALE'S
36 inch Fuller Printed Permanent Cottons 89c yd.
36 inch Fuller Printed Chambray \$1.19 yd.

When You Think of FABRICS Think of HALE'S
36 inch Fuller Printed Permanent Cottons 89c yd.
36 inch Fuller Printed Chambray \$1.19 yd.

When You Think of FABRICS Think of HALE'S
36 inch Fuller Printed Permanent Cottons 89c yd.
36 inch Fuller Printed Chambray \$1.19 yd.

When You Think of FABRICS Think of HALE'S
36 inch Fuller Printed Permanent Cottons 89c yd.
36 inch Fuller Printed Chambray \$1.19 yd.

When You Think of FABRICS Think of HALE'S
36 inch Fuller Printed Permanent Cottons 89c yd.
36 inch Fuller Printed Chambray \$1.19 yd.

When You Think of FABRICS Think of HALE'S
36 inch Fuller Printed Permanent Cottons 89c yd.
36 inch Fuller Printed Chambray \$1.19 yd.

When You Think of FABRICS Think of HALE'S
36 inch Fuller Printed Permanent Cottons 89c yd.
36 inch Fuller Printed Chambray \$1.19 yd.

When You Think of FABRICS Think of HALE'S
36 inch Fuller Printed Permanent Cottons 89c yd.
36 inch Fuller Printed Chambray \$1.19 yd.

When You Think of FABRICS Think of HALE'S
36 inch Fuller Printed Permanent Cottons 89c yd.
36 inch Fuller Printed Chambray \$1.19 yd.

When You Think of FABRICS Think of HALE'S
36 inch Fuller Printed Permanent Cottons 89c yd.
36 inch Fuller Printed Chambray \$1.19 yd.

When You Think of FABRICS Think of HALE'S
36 inch Fuller Printed Permanent Cottons 89c yd.
36 inch Fuller Printed Chambray \$1.19 yd.

When You Think of FABRICS Think of HALE'S
36 inch Fuller Printed Permanent Cottons 89c yd.
36 inch Fuller Printed Chambray \$1.19 yd.

When You Think of FABRICS Think of HALE'S
36 inch Fuller Printed Permanent Cottons 89c yd.
36 inch Fuller Printed Chambray \$1.19 yd.

When You Think of FABRICS Think of HALE'S
36 inch Fuller Printed Permanent Cottons 89c yd.
36 inch Fuller Printed Chambray \$1.19 yd.

When You Think of FABRICS Think of HALE'S
36 inch Fuller Printed Permanent Cottons 89c yd.
36 inch Fuller Printed Chambray \$1.19 yd.

When You Think of FABRICS Think of HALE'S
36 inch Fuller Printed Permanent Cottons 89c yd.
36 inch Fuller Printed Chambray \$1.19 yd.

When You Think of FABRICS Think of HALE'S
36 inch Fuller Printed Permanent Cottons 89c yd.
36 inch Fuller Printed Chambray \$1.19 yd.

When You Think of FABRICS Think of HALE'S
36 inch Fuller Printed Permanent Cottons 89c yd.
36 inch Fuller Printed Chambray \$1.19 yd.

When You Think of FABRICS Think of HALE'S
36 inch Fuller Printed Permanent Cottons 89c yd.
36 inch Fuller Printed Chambray \$1.19 yd.

When You Think of FABRICS Think of HALE'S
36 inch Fuller Printed Permanent Cottons 89c yd.
36 inch Fuller Printed Chambray \$1.19 yd.

When You Think of FABRICS Think of HALE'S
36 inch Fuller Printed Permanent Cottons 89c yd.
36 inch Fuller Printed Chambray \$1.19 yd.

When You Think of FABRICS Think of HALE'S
36 inch Fuller Printed Permanent Cottons 89c yd.
36 inch Fuller Printed Chambray \$1.19 yd.

When You Think of FABRICS Think of HALE'S
36 inch Fuller Printed Permanent Cottons 89c yd.
36 inch Fuller Printed Chambray \$1.19 yd.

When You Think of FABRICS Think of HALE'S
36 inch Fuller Printed Permanent Cottons 89c yd.
36 inch Fuller Printed Chambray \$1.19 yd.

When You Think of FABRICS Think of HALE'S
36 inch Fuller Printed Permanent Cottons 89c yd.
36 inch Fuller Printed Chambray \$1.19 yd.

When You Think of FABRICS Think of HALE'S
36 inch Fuller Printed Permanent Cottons 89c yd.
36 inch Fuller Printed Chambray \$1.19 yd.

When You Think of FABRICS Think of HALE'S
36 inch Fuller Printed Permanent Cottons 89c yd.
36 inch Fuller Printed Chambray \$1.19 yd.

When You Think of FABRICS Think of HALE'S
36 inch Fuller Printed Permanent Cottons 89c yd.
36 inch Fuller Printed Chambray \$1.19 yd.

When You Think of FABRICS Think of HALE'S
36 inch Fuller Printed Permanent Cottons 89c yd.
36 inch Fuller Printed Chambray \$1.19 yd.

When You Think of FABRICS Think of HALE'S
36 inch Fuller Printed Permanent Cottons 89c yd.
36 inch Fuller Printed Chambray \$1.19 yd.

The J.W. HALE co. MANCHESTER, CONN.
36 inch Fuller Printed Permanent Cottons 89c yd.
36 inch Fuller Printed Chambray \$1.19 yd.

ATOM-BOMB Experts!
Deaf? Don't let the other nuclear physicists know you are having hearing trouble. Find out today about the new Dullberg with the really inconspicuous XV-100 receiver. Phone, write, or come in... PERSONAL HEARING SERVICE 808 MAIN STREET—MITCHELL 9-6281

Caution Failed Here
VOL. LXVIII, NO. 112 (Classified Advertising on Page 18)

Democrats Voice Fear About War
Washington, Feb. 11 (AP)—Sen. Russell (D-Ga.) and Mansfield (D-Mont.) said today they fear the United States may be backed into war in Indochina.

Big Four Farley Breakup May Be Sought by French
Washington, Feb. 11 (AP)—South Korea was reportedly offered to send at least one and possibly two army divisions to Indochina to help battle Communist-led Rebels.

Unity Plans Discussion Completed
Berlin, Feb. 11 (AP)—The French delegation here is thinking in terms of a break-up of the Berlin Conference in a week, it was learned today.

Valentine Gifts
Handkerchiefs for Valentine Gifts
Dainty embroidered handkerchiefs in white and pastel shades. Also, get heart prints and lace edge. 25c to \$1.00 each

Valentine Jewelry
Large assortment of pair earrings, necklaces, bracelets in sparkling, rhinestone, tailored and stone set jewelry. \$1.00 to \$5.98

Valentine Toiletries
YARDLEY BOND STREET COLOGNE SPECIAL \$1.25
LELONG STICK COLOGNE \$1.10
YARDLEY STICK COLOGNE \$1.50

Valentine Gifts
Handkerchiefs for Valentine Gifts
Dainty embroidered handkerchiefs in white and pastel shades. Also, get heart prints and lace edge. 25c to \$1.00 each

Bank Larceny Held Tricky; Culprit Objects
Fresno, Calif., Feb. 11 (AP)—A federal judge today granted a contempt charge against gambler Frank Erickson.

U. S. Drops Charge In Erickson Case
New York, Feb. 11 (AP)—A federal judge today granted a government motion to dismiss a contempt charge against gambler Frank Erickson.

Central Railroad Faces Stiff Fight over Control
New York, Feb. 11 (AP)—The Interstate Commerce Commission today announced it would continue to hold hearings on the control of the New York Central Railroad.

Blood Money Used To Pay Tax Claims
Des Moines, Iowa, Feb. 11 (AP)—An irate taxpayer, who paid part of a \$13,245 federal tax claim with a tub full of silver dollars over the top, today won a court order to have his tax claim reduced.

Democracy's Voice Fear About War
Washington, Feb. 11 (AP)—Sen. Russell (D-Ga.) and Mansfield (D-Mont.) said today they fear the United States may be backed into war in Indochina.

Big Four Farley Breakup May Be Sought by French
Washington, Feb. 11 (AP)—South Korea was reportedly offered to send at least one and possibly two army divisions to Indochina to help battle Communist-led Rebels.

Bank Larceny Held Tricky; Culprit Objects
Fresno, Calif., Feb. 11 (AP)—A federal judge today granted a contempt charge against gambler Frank Erickson.

U. S. Drops Charge In Erickson Case
New York, Feb. 11 (AP)—A federal judge today granted a government motion to dismiss a contempt charge against gambler Frank Erickson.

Democracy's Voice Fear About War
Washington, Feb. 11 (AP)—Sen. Russell (D-Ga.) and Mansfield (D-Mont.) said today they fear the United States may be backed into war in Indochina.

Big Four Farley Breakup May Be Sought by French
Washington, Feb. 11 (AP)—South Korea was reportedly offered to send at least one and possibly two army divisions to Indochina to help battle Communist-led Rebels.

Bank Larceny Held Tricky; Culprit Objects
Fresno, Calif., Feb. 11 (AP)—A federal judge today granted a contempt charge against gambler Frank Erickson.

U. S. Drops Charge In Erickson Case
New York, Feb. 11 (AP)—A federal judge today granted a government motion to dismiss a contempt charge against gambler Frank Erickson.

Democracy's Voice Fear About War
Washington, Feb. 11 (AP)—Sen. Russell (D-Ga.) and Mansfield (D-Mont.) said today they fear the United States may be backed into war in Indochina.

Big Four Farley Breakup May Be Sought by French
Washington, Feb. 11 (AP)—South Korea was reportedly offered to send at least one and possibly two army divisions to Indochina to help battle Communist-led Rebels.

Bank Larceny Held Tricky; Culprit Objects
Fresno, Calif., Feb. 11 (AP)—A federal judge today granted a contempt charge against gambler Frank Erickson.

U. S. Drops Charge In Erickson Case
New York, Feb. 11 (AP)—A federal judge today granted a government motion to dismiss a contempt charge against gambler Frank Erickson.

The Weather
Forecast for Feb. 11-12, 1954
Chance of light snow tonight, low 1-9; cloudy, cold and windy tomorrow, high 20.

Price Five Cents

Manuscript by Bodenheim Slayer
Harold Weinberg, foreground, 25-year-old Greenwich Village dweller is escorted by detective in New York City police station.

Unity Plans Discussion Completed
Berlin, Feb. 11 (AP)—The French delegation here is thinking in terms of a break-up of the Berlin Conference in a week, it was learned today.

Americans Kept Back In Struggle
Hanoi, Indochina, Feb. 11 (AP)—The number of American troops in Indochina is climbing rapidly towards the 1,000 mark, but rarely do any of them get to see what French troops are doing with the Communist-led Vietminh.

Weinberg Outburst Marks Arraignment
New York, Feb. 11 (AP)—Defiantly shouting "I killed two Communists; I ought to get a medal," ex-dishwasher Harry Weinberg was taken to police headquarters today for arraignment as the slayer of Maxwell Bodenheim and the eccentric post-actor third wife.

Malm Recounts Events Leading To Girl's Death
Hartford, Feb. 11 (AP)—Robert N. Malm today again retraced his wandering footsteps of last Dec. 9, which led him to the place where he met Irene Fiedorowicz with whose murder he is charged.

Bulletins from the AP Wires
GAG FOR MCGLOTH
Washington, Feb. 11 (AP)—The State Department today called for a gag on a Civil Service commission member who had been speaking out for the Bureau of National Affairs.

Last Union Army Survivor Celebrates 107th Birthday
Duluth, Minn., Feb. 11 (AP)—A best wishes for your continued health and happiness. The Union Army in the Civil War. The veteran was celebrating his 107th birthday today.

Sleepless? Over Three Hundred Finished Mansions and Markers in Our Display

Long Fight on School Seen Detrimental to Future Bond Issues

A prolonged fight over the Keeney Street school project would definitely have an adverse effect on the town's future bond issues...

Contract Has 50-50 Chance In Hamilton-Standard Vote

The new two-year work contract between Hamilton-Standard and the workers has a 50-50 chance of being approved...

Light Agenda Faces Board

A light agenda faces the Board of Directors at their meeting Tuesday night...

Bank's Town Buildings To Be Closed Tomorrow

Local banks and the Municipal Building offices will be closed tomorrow in honor of Lincoln's birthday...

For The Best Of Service

Our cheerful, courteous waitresses serve you well, make you comfortable throughout your meal...

School Board Reappoints All School Staff Members

At their financial drive at a meeting held Feb. 10, the Board of Education voted to reappoint all members of the school staff...

Bank Is Tricked In Giving Money

Petroleum bank asked him to sign some papers so a note could be paid off, and he got a check for \$150.00...

Church of the Assumption Fund Drive Opens

The fund drive for the Church of the Assumption is being held on the west side of town to raise the cost of the new rectory...

Public Nurse Assn. Receives Reports

Mrs. Edna Bailey, president of the Board of Directors of the Manchester Public Health Nursing Assn., presided at the monthly meeting...

Hollister PTA Sees 'Passion for Life'

"Behind each face, a soul" is the conviction held by the young professor in the full length film "Passion for Life"...

MANCHESTER MEMORIAL COMPANY

MANCHESTER RUG SHAMPOOING CO.

STATE Hi Boys and Girls

LaFOND BROTHERS STEAK HOUSE

TELEVISION PROGRAMS

COX'S HARDWARE

WINE & LIQUOR VALUES

TRIPLE STORES

Power Talk May Close

ERICKSON CONTEMPT CHARGES DROPPED

OAK GRILL

BETTER SEE Motorola TV

WARM AS TOAST

LOFT'S CANDIES

MANCHESTER RUG SHAMPOOING CO.

Power Talk May Close

STATE Hi Boys and Girls

TELEVISION PROGRAMS

WARM AS TOAST

LOFT'S CANDIES

LOFT'S CANDIES

Manchester Evening Herald... Published October 1, 1931... Subscription Rates...

been on strike against the carrying out of this policy, refusing to do any work at all in New York...

Open Forum... "Devolving Tactics" To the Editor: I think it is about time that the people in Manchester who are against waste and extravagance...

They are many reasons for opposing the way the New York employees feel. None of us likes the way the South is bringing New England industry with advantage which are likely to be only temporary in character...

What goes on in Indo-China? Some reports would indicate that the French are being defeated, day after day. Others would indicate that the French are making plans and that no very big battles are imminent...

Defense Secretary Wilson says that French views on Communist are merely taking advantage of present conditions to put pressure on us, or whether the situation is mostly a matter of imagination...

That the Democrats at Washington should have presented speeches like that which Dewey delivered at Hartford in December is natural. A lot of good Republicans, too, regretted the manner in which the New York Governor seemed to be trying to point all Democrats as traitors...

But for the Democrats at Washington to take special umbrage at more recent Republican speeches, from many sources, in which the Democrats have been attacked for spreading "doom and gloom" and for trying to wage a "Fear Deal" war against the Eisenhower administration...

But for the Democrats at Washington to take special umbrage at more recent Republican speeches, from many sources, in which the Democrats have been attacked for spreading "doom and gloom" and for trying to wage a "Fear Deal" war against the Eisenhower administration...

Lo FLAMME APPLIANCE CO. 15 OAK ST.—WATKINS BUILDING

Connecticut Yankee By A. H. O. What went on in the private office of State Comptroller Fred Zeller and Governor John Lodge, in the Governor's office one day in late 1953, is apparently shrouded in discreet mystery...

A Thought for Today... NOW DEER? Marguerite Harmon Rose tells the following story in her book "Every Day a Prayer"...

Thespians to Play Saturday on WTIC... The Manchester Center Thespians will be heard over Station WTIC on Saturday at 3 p. m. in an original drama, "The Hero"...

STEPS TO WISDOM... New York (AP)—Rose, one of Central Park's two hippopotamuses, is dead, apparently of old age...

VALENTINE DANCE... Sponsored by Daughters of Isabella, American Legion Hall SAT., FEB. 13, 1954

BUY KELVINATOR IF YOU WANT THE BEST... A space-saving refrigerator with magic cycle defrosting...

It's a record-breaker in more ways than one—this spectacular CENTURY. It's a record-breaker in power-to-weight ratio—with the greatest power-per-pound figure in all Buick history...

It's a record-breaker in horsepower-per-dollar—brings you more power than you get in any other car in America at the price. And what this phenomenal CENTURY can deliver in thrilling and safer road command is a deep satisfaction.

Lo FLAMME APPLIANCE CO. 15 OAK ST.—WATKINS BUILDING

News Rhymes By J. P. D. "Life Span of Paper Money" Under study by Treasury...

DEWEY-RICHMAN 387 MAIN ST. MANCHESTER... EAST HARTFORD TEL. BUHLER 9-9351

First Spring Print in BATES DISCIPLINED COTTON... Sizes 3 to 8x... 4.98 Sizes 7 to 14... 5.98

Everything for the Aquarist... 29. SUNSET STREET — TEL. MI-3-5705

Coming UP! THE 200-hp CENTURY! (horsepower)

SENSATION IN POWER AND PRICE

climbing with unbelievable ease—and enormous emergency reserve power instantly at hand when you need it.

Why not drop in this week to see, sample and price the tomorrow-styled Buick CENTURY? We believe you will find it the power and price sensation of today's automotive world.

GORMAN MOTOR SALES, Inc. 285 MAIN STREET — MANCHESTER

CAR Vet. Overseas His 107th Birthday (Continued from Page One) health, served about a year in an artillery regiment before being mustered out in the Civil War...

Judging Completed in Young Manchester Paints Contest... This year's Young Manchester Paints Competition closed yesterday afternoon...

Winners in the Young Manchester Paints Competition were selected by these judges yesterday: From left to right are Superintendent of Schools Arthur H. Hiller, Miss Ruby Towle, elementary art director in East Hartford school, and Julian Akas, associate professor at Williams State Teachers College...

Grade 1—Toys, Jennifer Joan Hollister, Mrs. Woodbridge, Cynthia Flynn, Silver Lane, Mrs. Adeline Tomkiet, Donna Senbitt, Highland Park, Miss Christians.

Grade 2—Vegetables, Ann Frankovich, Verlanek, Mrs. Adams, Arthur Gravilla, Robert Adams, Doyle, Kathleen South, Lincoln, Miss Alice Corman, Honorable mention, Karl Bogli, Nathan Hale, Miss Yolanda Franks, 4-Workman's Tools, James Benson, Highland Park.

Lodge Says Schools Take 30 Cents Out of Tax Dollar... New Haven, Feb. 11 (AP)—Gov. John Lodge last night told a radio-television audience that public education in Connecticut for 1953 took nearly 30 cents of every general fund tax dollar...

Y-Teen Groups Collect For Heart Fund Drive... Members of the four Y-Teen groups at Manchester High School, under the supervision of George C. Kinnering, of the high school faculty, are participating in a heart fund drive...

Y-Teen Groups Collect For Heart Fund Drive... The money will be turned over to William Knight, treasurer of the Manchester Heart Fund, for counting after 9 o'clock tonight.

YOUR WHOLE FAMILY WILL THRIVE ON GOLDEN Blue Bonnet... THE MARGARINE THAT GIVES ALL 3: Fat! Protein! Economy!

Make Bursack's every-day food shopping center. Wide, spacious aisles—plenty of free parking right at the door.

Selected Fresh FRUITS AND VEGETABLES: SWEET INDIAN RIVER GRAPEFRUIT 4 For 25c, FIRM SUNKIST LEMONS 6 For 29c, FANCY SUNKIST NAYEL ORANGES Doz. 59c, D'ANJO PEARLS 5 For 29c, LARGE SWEET PINEAPPLES Each 39c, MEATY GREEN MOUNTAIN POTATOES 10 Lb. Bag 29c, GOLDEN CRISP CARROTS 2 Cello Pkgs. 23c, 28-OZ. CAN STORLEY'S SLICED PEACHES Can 29c, VAN CAMP'S OVEN BAKED BEANS 2 3/4 Oz. 25c, 14-OZ. PKG. PILLSBURY'S ANGEL FOOD MIX 53c, SUNKIST PRUNE JUICE Qt. Bot. 27c, 16-OZ. CANS SHURFIN' Grapefruit Sections 2 Cans 35c, SHURFIN' CUSTOM-GROUND COFFEE Lb. 91c, OREO COOKIES Pkg. 37c

PRIME OR CHOICE BLOCk Chuck Roast lb 49¢, EXTRA FANCY Native Fowl lb 45¢, BONELESS Veal Roast lb 59¢, Lamb Forequarters lb 35¢ (Boned and rolled if desired), NEW ENGLAND STYLE Smoked Picnics lb 55¢, Sunlight Butter lb 72¢, BLUE BONNET MARGARINE only 19¢ (With 10c Coupon)

Frozen Food: BIRDS EYE CHICKEN PIES 3 For \$1.00, PRIDE OF OREGON STRAWBERRIES 3 10-Oz. 85¢, SWEET LIFE ORANGE JUICE 2 For 29¢

BURSACK'S SUPER MARKET 1175 B. ROAD COR. MCKEE ST. PHONE MI-3-8532 "NEVER A PARKING PROBLEM" OPEN THURS. UNTIL 9 P. M. FRIDAY UNTIL 9 P. M.

Court Scrap Seen On Beauty Contest... (Continued from Page One) America would be taken by the State Junior Chamber of Commerce...

Exceeds College Expense... Mrs. Juttion said the 1953 figure did not include \$17,000,000 which the State spent for the operation of Teachers College, vocational schools, the University of Connecticut, the State Laboratory, teachers' retirements and grants for new school buildings...

Thousands of motorists rove around the Sun, mostly in paths between the orbits of Mars and Jupiter.

COLLECTS CIGARETTES... Naples (AP)—Andrea Capasso, Neapolitan smoker, has collected 470 different brands of cigarettes.

SEE FOR YOURSELF! Use This Coupon To SAVE 10¢ ON Blue Bonnet Margarine

Blue Bonnet Margarine... This coupon good 10¢ at any store for Blue Bonnet Margarine TOWARD COST OF 1 LB. OF

Blue Bonnet Margarine... Mrs. Richard Arlen gives Blue Bonnet his approval!

Blue Bonnet Margarine... This coupon good 10¢ at any store for Blue Bonnet Margarine TOWARD COST OF 1 LB. OF

Blue Bonnet Margarine... This coupon good 10¢ at any store for Blue Bonnet Margarine TOWARD COST OF 1 LB. OF

COURT SCRAP SEEN ON BEAUTY CONTEST... (Continued from Page One) Patricia answered the request of an official by saying he would go to court against any parties who might come out against her...

Exceeds College Expense... Mrs. Juttion said the 1953 figure did not include \$17,000,000 which the State spent for the operation of Teachers College, vocational schools, the University of Connecticut, the State Laboratory, teachers' retirements and grants for new school buildings...

Thousands of motorists rove around the Sun, mostly in paths between the orbits of Mars and Jupiter.

COLLECTS CIGARETTES... Naples (AP)—Andrea Capasso, Neapolitan smoker, has collected 470 different brands of cigarettes.

SEE FOR YOURSELF! Use This Coupon To SAVE 10¢ ON Blue Bonnet Margarine

Blue Bonnet Margarine... This coupon good 10¢ at any store for Blue Bonnet Margarine TOWARD COST OF 1 LB. OF

Blue Bonnet Margarine... Mrs. Richard Arlen gives Blue Bonnet his approval!

Blue Bonnet Margarine... This coupon good 10¢ at any store for Blue Bonnet Margarine TOWARD COST OF 1 LB. OF

Blue Bonnet Margarine... This coupon good 10¢ at any store for Blue Bonnet Margarine TOWARD COST OF 1 LB. OF

Central Faces Threat of Fight Over Controls

(Continued from Page One)
Might be made directors but also Mr. Young's insistence that he must become its chairman, and chief executive officer.

Young denied he sought to take over the post of William White, president of the Central. "This Morgan board," Young said, "now seeks to continue the issue by asserting that I, the largest individual stockholder, desire to substitute myself for Mr. White as chief operating executive. Nothing is further from the fact."

His Advanced Plans
Young, 56, has long fought the railroad men and criticized many traditional railroad methods. He has advanced plans to win back business to the railroad by heavy advertising and promotion and new and better equipment.

For years he has sought a voice in running the N. Y. Central. In 1947 he was invited to become a director, but the Interstate Commerce Commission barred him because he then was chairman of the Chesapeake & Ohio Railroad. The ICC forbids interlocking directors for the two railroads on grounds that they would compete for control of the Central road by resigning his post with the C&O last Jan. 15.

Skating Tonight

Skating hours tonight at Center District Pond again will be from 6:30 until 10 o'clock. Park Street. Horace Murphy said today that, with the prospect of colder weather tonight, skating will be permitted all day tomorrow, Lincoln's Birthday, at Center Springs.

Reliable sources figure holdings of Young and his associates amount to about 500,000 shares, or about five per cent of the total shares.

Central Stockholders
The largest holding among present directors of the railroad is that of Harold S. Vanderbilt, who has 17,000 shares. Director George Whitney, board chairman of J. O. Morgan & Co., represents 100 shares.

The C & O's 800,000 shares are represented on the present board by Percy J. Ebbott, president of the Chase Bank, who holds no shares, and his nephew, an original four-million-dollar investment into control of railroad properties worth billions.

It was through Allegheny that Young gained control of the C&O. The corporation, however, has never divested itself of all C&O stock.

In 1931 infant mortality in the United States reached a new low that the New York Central board

Zion Lutherans To have Special Service Sunday

In line with the 60th anniversary celebration and forward movement, the morning service will be held on Sunday at noon at the Zion Lutheran Church, Cooper and eight avenues, will bring home deeply personal and applied spiritually and liberally.

For a number of Sunday evenings, committees comprising business people, salesmen, some-occasional and others, have not only spiritual and practical training for businessmen in the field of the church, they have received a workers, trainers or leader's kit with materials and helps to make personal, friendly and helpful relations, going out two by two. This includes approach cards, sheets and guides for different groups and which the church recognizes the art of good salesmanship in Christ's example.

Businessmen and salesmen have been charged to distribute Feb. 21, Pastor Prokopy will deliver a special message on "The Only Terms on Which We Can Meet Our Own World," John 4:19-26.

A special welcome is extended to all to attend these services, especially those who have no church home or definite affiliation. The population of Sweden is about seven million.

Businessmen and salesmen have been charged to distribute Feb. 21, Pastor Prokopy will deliver a special message on "The Only Terms on Which We Can Meet Our Own World," John 4:19-26.

A special welcome is extended to all to attend these services, especially those who have no church home or definite affiliation. The population of Sweden is about seven million.

Arab Gets Man By Reading Paper

Houston, Tex. (AP)—Here's a tip for officers who serve subpoenaed and take who are served with them.

When a secretary asks him to wait, Binford pulls a newspaper printed in Arabic out of his pocket. After glancing at it, he appears to spot an item of terrific interest. "What's making strange," he said.

Usually the secretary rushes to Binford and he serves the subpoena.

MALABIA FIGHT
Amman, Jordan (AP)—A five-year-old anticolonial campaign is under way in the Yarmuk Valley where men are fighting the Yarmuk Irrigation project. The campaign is to give five acres of fertile lands to be jointly conducted by the United Arab Emirates and the Jordan government.

Businessmen and salesmen have been charged to distribute Feb. 21, Pastor Prokopy will deliver a special message on "The Only Terms on Which We Can Meet Our Own World," John 4:19-26.

A special welcome is extended to all to attend these services, especially those who have no church home or definite affiliation. The population of Sweden is about seven million.

Skywatch Schedule

Friday, Feb. 12
Midnight-2 a. m. Anthony Silvestri
2 a. m.-6 a. m. Volunteers Needed
6 a. m.-9 a. m. Volunteers Needed
9 a. m.-Noon Dorothy Bohler
Noon-2 p. m. Volunteers Needed
2 p. m.-6 p. m. Raymond K. Clement
6 p. m.-10 p. m. Olive Ray, Grace Anderson
10 p. m.-Midnight Mr. and Mrs. Herbert Benson
Mention Taggart, alternating weeks)

Volunteers may register at Civil Defense Headquarters, Municipal Building, Manchester on Monday, Wednesday and Friday from 1-5 p. m.

Usually the secretary rushes to Binford and he serves the subpoena.

MALABIA FIGHT
Amman, Jordan (AP)—A five-year-old anticolonial campaign is under way in the Yarmuk Valley where men are fighting the Yarmuk Irrigation project. The campaign is to give five acres of fertile lands to be jointly conducted by the United Arab Emirates and the Jordan government.

Businessmen and salesmen have been charged to distribute Feb. 21, Pastor Prokopy will deliver a special message on "The Only Terms on Which We Can Meet Our Own World," John 4:19-26.

A special welcome is extended to all to attend these services, especially those who have no church home or definite affiliation. The population of Sweden is about seven million.

MANCHESTER PUBLIC MARKET

WHEN SHOPPING FOR BETTER FOODS — SAVE TIME AND ENERGY — TRY THE PUBLIC MARKET FIRST!

805 MAIN ST. 805 MAIN ST.

Weekend Best Buys

BONELESS VEAL 59¢
To Roast Native Milk Fed Lb.

LEAN SHORT SHANK SMOKED SHOULDERS 49¢

NATIVE FRESH DRESSED POULTRY CAPONS Med. Size—6 to 7 Lbs. Lb. 59¢

FRYERS Cut Up—Good Size Each \$1.69

CHICKEN PARTS BREAST, LEGS, WINGS AND SOUP STOCK 69¢ LB.

OUR OWN MAKE PURE PORK MEAT SAUSAGE Lb. 59¢

OUR OWN MAKE TASTY ITALIAN SAUSAGE Lb. 89¢

FRESHLY GROUND ALL BEEF HAMBURG MAKES A NICE MEAT LOAF Lb. 39¢ 2 Lbs. 75¢

Try Our Own Make Sugar Cured Corned Beef FANCY BRISKET Lb. 69¢

LEAN RIB OR CHUCK PIECES Lb. 25¢

CHUCK PIECES ALL LEAN Lb. 69¢

FRANKFURTS Armour Star, Grote and Weigal, Your Choice Lb. 65¢

CREAMERY FRESH LAND O' LAKES BUTTER Lb. 75¢

N.B.C. RITZ CRACKERS 1 lb. PKG. 33¢

FRUITS and VEGETABLES

NATIVE GREEN MOUNTAIN POTATOES 50-LB. BAG 89¢

NEW TEXAS CABBAGE Lb. 7c

FANCY, 4 TO A PACK TOMATOES 19c

INDIAN RIVER JUICE ORANGES Doz. 39c

INDIAN RIVER GRAPEFRUIT 4 For 25c

GOLDEN RIPE BANANAS Lb. 16c

CALIF. TABLE SUNKIST ORANGES Doz. 55c

FIRST NATIONAL STORES

CUT FROM HEAVY WESTERN CORN-FED STEERS

CHUCK ROAST BONE IN Lb. 69¢ BONELESS Lb. 49¢

7-INCH CUT - FROM WESTERN STEERS

RIB ROAST A SUNDAY FAVORITE Lb. 59¢

WEEK'S BEST BUYS!

White Meat Tuna TIMBERLAKE SOLID PACK 7-OZ CAN 32¢

Chunklet Tuna TIMBERLAKE WHITE MEAT 6-OZ CAN 29¢

"Yor" Garden Peaches SLICED OR HALVES 2 30-OZ CANS 69¢

Finest Pineapple SLICED FOR EASY-DESSERTS 29-OZ CAN 32¢

Spaghetti FRANCO AMERICAN COOKED WITH EXTRA GOOD SAUCE 3 15H OZ CANS 41¢

Evangeline Milk EVAPORATED FORTIFIED WITH VITAMIN D 4 14H OZ CANS 49¢

Finest Ketchup CHOCKFUL OF TANGY ZESTY GOODNESS 2 14-OZ BTL'S 35¢

Cloverdale MARGARINE QTR LB PRINTS Lb. 21¢

Finest Beets HEALTHFUL, NUTRITIOUS 2 16-OZ CANS 25¢

Peanut Butter FINEST CRUNCHY or SMOOTHY 12-OZ JAR 33¢

BREAKFAST SUGGESTIONS! Save with First National Fine Coffees

RICHMOND Lb. BAG 89¢

Kybo RICH, FULL BODIED Lb. BAG 91¢

Copley REGULAR OR DRIP Lb. CAN 95¢

TEA TIME FAVORITES! Nabisco OREO CREAM Sandwich 7 7/8 OZ CELLO 25¢

FF.V. Dutch Sprits 7-OZ PKG 25¢

Beardsley SHREDDED Codfish 4-OZ PKG 20¢

Educator Crax Lb. PKG 33¢

Herb Ox Cubes BEEF OR CHICKEN CRAMBERY SAUCE CAN OF 3 8c

Ocean Spray 16-OZ CAN 19c

Hydrox Cookies SUNSHINE 7 7/8 OZ CELLO 25¢

Pillsbury 4 VARIETIES CAKE MIXES 2 17-OZ PKGS 63¢

Durkee's Coconut SHREDDED CELLO 29¢

Reddi-Wip 7-OZ CAN 49¢

Octagon Soap BAR 8c

NO QUESTION ABOUT IT!

FIRST NATIONAL MEATS ARE TOPS IN QUALITY AND PRICED TO FIT MY BUDGET!

Famous Finest Quality Meat Values!

PORTERHOUSE STEAK

WELL TRIMMED FLAVORFUL KING OF THE BEEF STEAKS Lb. 79¢

THRIFTY TRIMMED - TENDER FLAVORFUL

Sirloin Steak Lb. 79¢

TENDER, JUICY, FINE EATING

Top Round STEAK or ROAST Lb. 79¢

FROM YOUNG TENDER CORN-FED WESTERN STEER BEEF

Face Rump Roast Lb. 79¢

EXTRA LEAN - FRESHLY GROUND PURE BEEF

Chopped Beef Lb. 39¢

FROM YOUNG TENDER, SOFT MEATED LAMBS

Lamb Legs OVEN READY Lb. 67¢ Lb. 59¢

Lamb Fores TENDER FLAVORFUL Lb. 33¢

Forequarter Lamb Chops WELL TRIMMED Lb. 65¢

Fresh Chickens FRYERS or BROILERS 2 1/2-3 1/2 Lb. AVG Lb. 39¢

CLEANED ALL WASTE REMOVED Lb. 53¢

Pork Roast YOUNG PORKERS 8 1/2 - UP TO 6 LBS. Lb. 55¢

Bologna FINEST - LARGE OR SMALL Lb. 55¢

Skinless Frankfurts 1-LB CELLO 53¢

Smoked Butts MILDLY CURED Lb. 85¢

SEA FOOD VALUES

Fresh Haddock Fillet Lb. 39¢

Mackerel Lb. 23¢

Split Mackerel PAN READY Lb. 33¢

FRESH FRUITS & VEGETABLES

FLORIDA - JUICY SWEET - CONTAINS VITAMIN C

ORANGES 5-LB BAG 35¢

Grapefruit FLORIDA SUN-RIPENED - FINE EATING 4 FOR 23¢

Oranges TEMPLE FLORIDA A DISTINCTIVE FLAVOR 3 LBS 25¢

Pears D'ANJOU - READY TO EAT 3 LBS 39¢

Lettuce CALIFORNIA - FRESH CRISP 2 HDS 23¢

Escarole FLORIDA A NUTRITIOUS SALAD FAVORITE 3 LBS 29¢

Carrots WESTERN - FRESH CRISP CELLO PKG 10¢

Cabbage NEW TEXAS - SOLID HEADS Lb. 5¢

Cauliflower SNOWY WHITE - HEALTHFUL HD 33¢

Broccoli WESTERN FRESH GARDEN GREEN BCH 19¢

Yellow Onions MILD 3 LBS 10¢

"YOR" GARDEN FROZEN FOODS

ORANGE JUICE FRENCH OR WAX CUT BEANS 2 2-OZ PKGS 39¢

2 6-OZ CANS 29¢

Potatoes FRENCH FRIED 2 2-OZ PKGS 29¢

BROOKSIDE BUTTER FRESH CREAMERY Lb. ROLL 75¢

FRESH EGGS BROOKSIDE LGE SIZE - GRADE A DOZ 69¢

Cloverdale Eggs DOZ 65¢

CHOICE FOOD VARIETIES FOR ECONOMICAL MEALS

You're just in time for our Big Food Varieties Event. Everybody's food favorites are in the act—an avalanche of special values from every department. Be value-wise and money-wise by buying in quantity. . . And don't forget those economy sizes that mean extra food servings for the family.

ALL OUR BEEF CUT FROM HEAVY WESTERN CORN-FED STEERS

FANCY BRISKET

CORNER BEEF WELL TRIMMED Lb. 69¢

CHUCK ROAST BLOCK STYLE BONE-IN Lb. 49¢

PORK LOINS 7-IB CUT FOR ROASTING Lb. 43¢

ROASTING CHICKENS Lb. 53¢

FRESHLY GROUND HAMBURG Lb. 39¢

FRESHLY SLICED BEEF LIVER Lb. 39¢

FIRST PRIZE KNOCKWURST Lb. 65¢

LEAN, MEATY Rib Lamb Chops Lb. 69¢

HEALTHFUL, NUTRITIOUS Lamb for Stewing Lb. 19¢

YOUNG, TENDER LAMB FORES Lb. 33¢

FROZEN FOODS

SWEET LIFE ORANGE JUICE 2 6-Oz. Cans 29¢

BIRDS EYE FRENCH FRIES 2 9-Oz. Pks. 31¢

BIRDS EYE CHICKEN PIES 3 For \$1.00

GRAND DUTCH FLAED BEEF STEAKS PKG OF 4 49¢

BIRDS EYE HADDOCK FILLETS Lb. PKG. 51¢

LIBBY'S FRIED SHRIMP 6 OZ. PKG. 75¢

BIRDS EYE COD FILLETS 1 Lb. PKG. 43¢

BIRDS EYE Mackerel Fillets Lb. PKG. 49¢

WE SALUTE THE BOY SCOUTS OF AMERICA ON THEIR 44th ANNIVERSARY

FRESH FRUITS and VEGETABLES

FRESH ICEBERG LETTUCE 2 Heads 29¢

FRESH WASHED SPINACH Cello Bag 19¢

FANCY, FIRM, LARGE GREEN PEPPERS Lb. 29¢

NEW TEXAS CABBAGE Lb. 5c

SWEET, JUICY, SEEDLESS "Pink" Grapefruit 4 For 29¢

LARGE, SWEET SUNKIST NAVAL ORANGES Doz. 59¢

SWEET, JUICY TANGERINES 2 Doz. 49¢

FIRM, RIPE TOMATOES 2 Cello Pks. 35c

1 1/2 Oz. Pkg. OREO 37¢

JACK FROST SUGAR 5 lb bag 48¢

SWIFT'S BROOKFIELD BUTTER Lb. 75¢

CONN. GRADE A EGGS (large) doz. 69¢

BETTY CROCKER ANGEL FOOD CAKE MIX pkg. 53¢

VAN CAMP'S OVEN BAKED BEANS 2 Large 17-Oz. Cans 25¢

FRANCO-AMERICAN SPAGHETTI 3 1 1/2-Oz. Cans 41c

JES-80 GREEN BEANS 2 1 1/2-Oz. Cans 29c

JES-80 SWEET, TENDER PEAS 2 1-Lb. Cans 29c

VAL-VITA YELLOW GELING PEACHES 28-Oz. Can 29c

SWEET LIFE CORNER BEEF HASH Lb. Can 27c

LIBBY'S VIENNA SAUSAGE 4-Oz. Can 19c

STARBUCK DINNER EGG NOODLES and TUNA 15-Oz. 29c

CARNATION MILK 2 TALL CANS 27¢

FIRST FOOD STORE OF MANCHESTER, INC.

OPEN THURSDAY EVENING UNTIL 8:00—OPEN FRIDAY EVENING UNTIL 9:00

646 CENTER STREET PLENTY OF FREE PARKING

FIRST NATIONAL STORES

NESTLE'S EVEREADY COCOA Lb. CAN 53c	DAWN FRESH MUSHROOM SAUCE WITH SLICED MUSHROOMS 6-OZ CAN 10c	STRONGHEART DGC FOOD 2 16-OZ CANS 19c	KIRKMAN SOAP PRODUCTS DETERGENT BORAX SOAP FLAKES 1 1/2 Lb. PKG 29c	DIAL SOAP COMPLEXION 2 BARS 25c	DIAL SOAP DEODORANT 2 BARS 33c	OLD DUTCH CLEANSER 2 14-OZ CANS 23c
CASHMERE BOUQUET SOAP 3 REG 23c BATH BAR 11c	AJAX CLEANSER 2 14-OZ CANS 23c	V E L LGE PKG 30c	SWANEE TOILET TISSUE "COLO SOFT" 2 ROLLS 25c	F A B Buy 1 Giant Size Package and Get One 7 1/2-Oz Package FREE! GIANT PKG 72c	20 MULE TEAM Borax Lb. PKG 17c	PALMOLIVE SOAP 3 REG 23c BATH BAR 11c



SHOPPING FUN FOR EVERYONE NOW GOING ON AND CONTINUING THROUGH FEB. 20.

Everybody talks about the rising cost-of-living—but A&P DOES something about it. Hundreds of prices have been regularly reduced at A&P. It has always been A&P's policy to charge customers the lowest possible prices—based on the cost of food at A&P.

Dairy Land of Values!

- Ched-O-Bit 2 for 85¢
- Provolone Cheese 1/2 lb 59¢
- Gorgonzola Cheese 1/2 lb 75¢
- Baby Edam 1/2 lb 59¢
- Domestic Sardo-Romano 1/2 lb 75¢
- Tangy Link 1/2 lb 29¢
- Swiss Gruyere 1/2 lb 43¢
- Sliced Amer. 1/2 lb 29¢
- Salsami Cheese 1/2 lb 65¢
- Chuk O Gold 1/2 lb 41¢
- BORDEN'S CHEESES
- Cream Cheese 1/2 lb 39¢
- American Cheese 1/2 lb 33¢
- Camembert 1/2 lb 39¢
- Vare Sharp 1/2 lb 39¢
- Liederkrantz 1/2 lb 39¢
- Italian Grated Cheese 1/2 lb 33¢
- Pimento Cheese 1/2 lb 33¢
- Requefort Portion 1/2 lb 45¢
- Woj Cuts 1/2 lb 31¢
- KRAFT'S PRODUCTS
- Cheddar 1/2 lb 33¢
- McLaren Imperial 1/2 lb 33¢
- Cream Spread 1/2 lb 23¢
- Old English 1/2 lb 39¢
- Limburger 1/2 lb 41¢
- Sliced Swiss Canino 1/2 lb 79¢

Demonstrations
Balloons
Samples

HURRY, HURRY, HURRY, IT'S THE A&P APPRECIATION JAMBOREE!

116 EAST CENTER ST., MANCHESTER

- CANNED FRUITS**
- A&P Sliced Pineapple 27¢
 - Cranberry Sauce 19¢
 - Blended Juices 49¢
 - A&P Pineapple Chunks 31¢
 - Sour Pitted Cherries 25¢
 - Del Monte Fruit Cocktail 25¢
 - Sultana Prune Plums 45¢
 - Gold Seal Prune Juice 29¢
 - A&P Applesauce 35¢
 - Pineapple Juice 31¢
 - Crushed Pineapple 25¢
 - Maraschino Cherries 17¢
 - A&P Fruit Salad 47¢
 - A&P Peaches 57¢
 - A&P Grape Juice 17¢

- CANNED MEATS**
- Luncheon Meat 45¢
 - Armour's Chopped Ham 54¢
 - Mor or Spam 45¢
 - Corned Beef Hash 29¢
 - Swanson's Boned Turkey 37¢
 - Claridge Hamburger 39¢
 - Deviled Ham 19¢
 - Sunnyfield Dried Beef 27¢
 - Banquet Boned Chicken 35¢
 - Chicken Spread 23¢
 - Wilson's Chopped Beef 37¢
 - Corned Beef 47¢
 - Dinty Moore Beef Stew 39¢
 - Heinz Chicken Stew 33¢
 - Swanson's Chicken 39¢

- PICKLES—OLIVES—RELISHES**
- Dill Pickles 27¢
 - Cain's Cucumber Pickles 25¢
 - Jumbo Ripe Olives 25¢
 - Iona Tomato Sauce 15¢
 - Iona Tomato Puree 17¢
 - Ann Page Chili Sauce 25¢
 - Pickles 23¢
 - Swt. Midget Gherkins 25¢
 - Stuffed Olives 53¢

- SALAD DRESSINGS**
- Kraft's Miracle Whip 33¢
 - Ann Page Salad Dressing 27¢
 - Hellmann's Mayonnaise 43¢

- PRESERVES—JAMS**
- Ann Page Currant Jelly 25¢
 - Grange Marmalade 21¢
 - Preserves 29¢
 - Crabapple Jelly 19¢
 - Preserves 23¢
- CANNED VEGETABLES**
- Ann Page Beans 23¢
 - Niblets Corn 35¢
 - A&P Cream Style Corn 27¢
 - Iona Wax Beans 27¢
 - Friend's Baked Beans 47¢
 - A&P Fancy Peas 39¢
 - A&P Corn 29¢
 - A&P Spinach 25¢
 - Whole Irish Potatoes 23¢
 - Del Monte Fancy Peas 39¢
 - Heinz Baked Beans 35¢

- CEREALS—CRACKERS**
- Nabisco Shredded Wheat 18¢
 - Creme Sandwich 25¢
 - Kellogg's Corn Flakes 20¢
 - Quick Quaker Oats 35¢
 - Cream of Wheat 19¢
 - Burrry's Fig Bars 27¢
 - Educator Crax 33¢
 - Sunshine Krispy Crackers 27¢
 - Premium Saltines 27¢

- CANNED FISH**
- Sunnybrook Red Salmon 65¢
 - Sultana Tuna Fish 29¢
 - Sardines 29¢
 - Anchovies 25¢
 - Chicken-of-the-Sea 33¢
 - Domestic Crab Meat 63¢
 - Tomato Sardines 21¢

- MISCELLANEOUS**
- Our Own Tea 43¢
 - Tomato Soup 37¢
 - Beverages 32¢
 - Spaghetti 23¢
 - Ann Page Macaroni 19¢
 - Ann Page Peanut Butter 33¢
 - Heinz Vegetable Soup 27¢
 - Pastry Flour 37¢

- FROSTED FOOD ITEMS**
- Birds Eye Orange Juice 33¢
 - Pineapple Chunks 49¢
 - Birds Eye Wax Beans 23¢
 - Snow Crop Potatoes 19¢
 - Baxter's Green Beans 39¢
 - Nifty Waffles 27¢
 - Mixed Vegetables 21¢
 - Welch's Grape Juice 43¢
 - Libby's Succotash 25¢
 - Libby's Peas & Carrots 35¢

- PREPARED CAKE MIXES**
- Betty Crocker Bisquick 43¢
 - Betty Crocker Softasilk 39¢
 - Pancake Flour 25¢
 - Aunt Jemima 35¢
 - Pillsbury Hot Roll Mix 27¢
 - Flakorn Muffin Mix 19¢
 - Pillsbury Cake Mix 63¢



DON'T MISS THE FUN! COME ONE! COME ALL!

A&P Super Markets

A&P's February Storewide MONEY SAVERS!

February is a short month but A&P is making up for the days it lacks by making your dollars go further every day this month. You'll find value extra plentiful in department after department... prices unseasonably low after day. Result? It will really pay you to come see... come save at A&P. Do it today!

MAKE REAL SAVINGS WITH THIS REALLY FINE COFFEE!

You can't beat the "flavor-savings" combination of A&P's superb, freshly-roasted EIGHT O'CLOCK coffee. You'll love EIGHT O'CLOCK's fine, mellow flavor... and its money-saving price! Try it, you'll love it!

EIGHT O'CLOCK BAG 89¢

Rich and Full-Bodied. Vigorous and Winy.

Red and Full-Bodied. Vigorous and Winy.

1/2 lb. 89¢
3 1/2 lb. Bag 2.64
SAVE AN EXTRA 6¢... BUY THE 3 1/2 LB. BAG!

You Never Tasted Finer Preserves!

ANN PAGE PURE STRAWBERRY PRESERVES

12 OZ 29¢

More Ann Page Values!

MAYONNAISE 1/2 lb 31¢
PURE GRAPE JAM 1/2 lb 23¢

NEW! A&P'S OWN VACUUM-PACKED COFFEE

1-LB. CAN 95¢

NO FINER VACUUM-PACKED COFFEE IN ANY CAN WHY PAY MORE!

- Sweetheart Soap 3 REG CAKES 23¢
- Sweetheart Soap BATH CAKE 11¢
- Blu-White Flakes PKG 9¢
- Rice Uncle Ben's, Guaranteed Fluffy 14 OZ 21¢
- Palmolive 3 REGULAR CAKES 23¢
- Palmolive BATH CAKE 11¢
- Fab LARGE PACKAGE 30¢
- Super Suds 2 LARGE PKGS 55¢
- Ivory Snow LARGE PACKAGE 29¢
- Camay Soap BATH CAKE 11¢
- Camay Soap 3 REGULAR CAKES 23¢
- Calo CAT AND DOG FOOD 2 CANS 25¢
- Swift's Meats FOR BABIES 2 CANS 41¢
- Wesson Oil PT 36¢ QT 70¢
- Wrisley Soaps ASST Plastic Bag 49¢
- R&R Boned Chicken 6 OZ 69¢
- Lintit LIQUID LAUNDRY STARCH QT 19¢
- Dovalettes FACIAL TISSUES PKG 29¢
- Doval Toilet Tissues 2 ROLLS 25¢
- Woodbury's Bath Soap 4 CANS 39¢
- Woodbury's Soap SPECIAL OFFER! 4 UNIT 26¢

FACE RUMP, TOP ROUND, BOTTOM ROUND ROASTS 79¢ LB

ALL SUPER-RIGHT STEAKS AND ROASTS ARE CUT FROM HEAVY CORN-FED STEER BEEF

STEAKS PORTERHOUSE, CLUB SIRLOIN or T-BONE 79¢ LB

89¢-93¢ LB. YEAR AGO

Super-Right Meats - ONE LOW PRICE ONLY as Advertised!

PICNICS SUPER-RIGHT SMOKED SHORT SHANK 49¢ LB

LAMB LEGS 59¢ OVER-READY LB 67¢

Chickens 53¢

Large Fowl 55¢

Rib Roast 59¢

Rib Roast 65¢

Chuck Roast 49¢

Boneless Chuck 69¢

Fancy Sliced Beef Liver 39¢

National Frankfurts - Sauskrout Wurst 49¢

Sauerkraut 2 LB 33¢

National Fish Week Features!

Jumbo Shrimp 85¢

Fresh Haddock Fillets 43¢

French Fried Scallops 75¢

PEPPERS NEW LOW PRICE! 19¢ LB

FLORIDA FRESH GREEN SWEET—GRAND WITH STEAKS

APPLES 4 FOR 29¢

FLORIDA FRESH YELLOW TENDER KERNELS

COOKING 3 LBS 35¢

RED ROME-U. S. FANCY

TOMATOES IONA 4 1 LB CANS 45¢

GRAPEFT JUICE SWEETENED 2 1 QT 14 OZ CANS 43¢

ORANGE JUICE 1 QT 14 OZ 27¢

PICKLES SWEET MIXED—JUST REDUCED—KING PHILLIP QTS 29¢

BUTTER SUNNYFIELD—HIGH SCORE, FRESH CREAMERY—1/4 LB PRINTS LB 77¢

- Green Beans 2 15 OZ 33¢
- Iona Tomato Juice 2 1 QT 14 OZ 43¢
- Reliable Peas 2 1 LB 29¢
- Reliable Wax Beans 2 15 OZ 31¢
- Iona Peaches 1 1/2 LB 25¢
- Black Pepper 2 OZ 23¢
- A&P Fruit Cocktail 1 1/2 LB 36¢
- Sliced Pineapple 2 1 LB 23¢
- A&P Sliced Beets 2 1 LB 23¢
- A&P Whole Beets 3 1 LB 35¢
- A&P Tomatoes 2 1 LB 47¢
- Grapefruit Sections 2 1 LB 29¢
- Ann Page Cherry Jam 4 1/2 OZ 25¢
- Ann Page Tomato Soup 4 1/2 OZ 37¢
- FRESH EGGS Sunnybrook Grade "A" Large Size Doz 67¢
- Educator Saltines 1 1/2 LB 27¢
- Sunnyfield Corn Flakes 12 OZ 19¢
- Daily Dog Pallets 3 LB 49¢
- Gingerbread Mix 2 1 LB 45¢
- Pannake Flour 2 1 LB 4 OR 25¢
- Log Cabin Syrup 12 OZ 27¢
- Cookies 2 1/2 LB 39¢
- Domestic Blue Cheese 1 1/2 LB 65¢
- Aged Sharp Cheddar 1 1/2 LB 59¢
- Munster Cheese 1 1/2 LB 53¢
- Frozen Food Favorites!
- Strawberries 3 PAGES 1.00
- Orange Juice 2 5 OZ 27¢
- Potatoes 2 PAGES 29¢

CUSTOMER'S CORNER

Practice makes perfect... We admit we haven't achieved perfection... but for 94 years your A&P has pioneered in many practices that have helped raise American eating standards... and helped lower food costs!

And we strive constantly to perfect our service to you. So if you feel we can improve our operation in any way to your benefit, won't you tell your A&P manager? It will help us help you.

CUSTOMER RELATIONS DEPARTMENT
A&P Food Stores
420 Lexington Avenue, New York 17, N.Y.

Sweet Treats for St. Valentine's Day... Sunday, February 14

- Sweetheart Cake EA 89¢
- Valentine Layer Cake EA 59¢
- Heart Shaped Coffee Cake 29¢
- Chocolates 14 OZ 79¢
- Choc Valentine Wrapped Box 69¢
- Jane Parker Pumpkin Pie EA 43¢
- Potato Chips 14 OZ 49¢
- Whole Wheat 2 LOAVES 29¢

Double Your Money Back Guaranteed!

dexo 3 LB 79¢ 1 LB 29¢

Try dexo for all shortening uses. If you are not entirely satisfied return the unopened portion and double your purchase price will be refunded.

IDEAL FOR CAKES, FRIES AND PERFECT PIES.

- Crisco 1 LB CAN 33¢ 3 LB CAN 90¢
- Karo Syrup RED OR BLUE LABEL 1 1/2 LB CAN 23¢
- Mazola Oil PTS 36¢ QTS 69¢
- Mazola Oil GALLON 2.07
- Borax 20 MULE TEAM 1 1/2 LB 17¢ 2 1/2 LB 31¢
- Boraxo CLEANS HANDS 1 1/2 LB 16¢ 1 LB 27¢

- Bond's Cucumber Slices 1 LB 19¢
- Bond's Fancy Dill Pickles QUART 39¢
- Sweet Mixed Pickles BOND'S JAR 43¢
- Sweet Midget Gherkins BOND'S JAR 25¢
- Sweet Tiny Pickles BOND'S PINT 33¢

- Libby's Cauliflower FRESH-FROZEN 10 OZ 25¢
- Libby's Brussel Sprouts FRESH-FROZEN 10 OZ 31¢
- Libby's Melon Balls FRESH-FROZEN 12 OZ 25¢
- Libby's Broccoli Spears 10 OZ 25¢

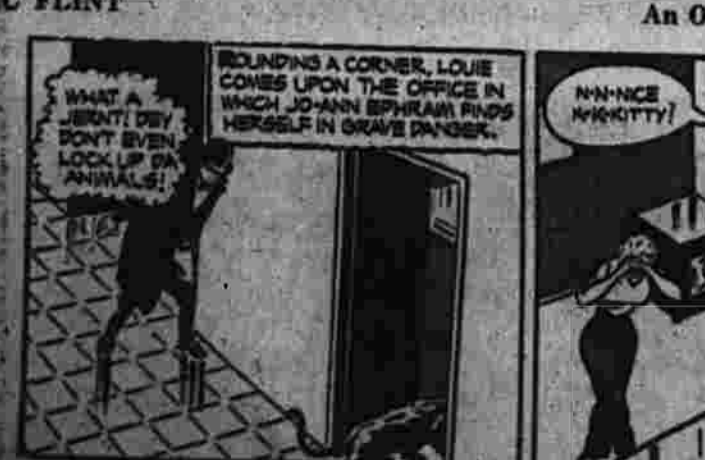
A&P Super Markets

TOONERVILLE FOLKS

BY FONTAINE FOX FUNNY BUSINESS

BY HERSHBERGER

DAILY CROSSWORD PUZZLE



Music-Makers crossword puzzle grid and clues.

BUGS BUNNY cartoon strip.

CHRIS WILKIN cartoon strip.

BOOTS AND HER BUDDIES cartoon strip.

HAZEL TURN OF THE SICKENING SOAP OPERA! cartoon strip.

FRISCHILLA'S POP cartoon strip.

THE STORY OF MARTHA WAYNE cartoon strip.

Sense and Nonsense column with various jokes and puzzles.

CARNIVAL cartoon strip by Dick Turner.

MANCHESTER DATE BOOK listing local events.

CLONE cartoon strip by Edgar Martin.

HAZEL TURN OF THE SICKENING SOAP OPERA! cartoon strip.

LET'S SEE ABOUT IT cartoon strip by Merrill C. Blosser.

THE STORY OF MARTHA WAYNE cartoon strip.

Top Business Leaders Open Forward Manchester Drive. With their sales lists under the arm and with enthusiasm...

Malm Recounts Events Leading To Girl's Death. I threw another knot in the fabric of the amount requested...

Manchester Date Book. Tomorrow Father and daughter, Emanuel Lutheran Church, 6:30 p. m.

INCOME TAX RETURNS. For Accounting Services. As Your Home or 344 MAIN ST.

DON'T Throw Them Away. Full plenty of Wear Left in Your Old Ties.

NOTICE BOTH THESE BANKS WILL BE CLOSED ALL DAY FRIDAY, FEB. 12 Lincoln's Birthday.

THE MANCHESTER TRUST COMPANY MEMBER FEDERAL DEPOSIT INS. CORP. THE SAVINGS BANK OF MANCHESTER

Weinberg Outburst Centers on 'Reds'. (Continued from Page One) named the three detectives guarding him.

Washburn Outburst. (Continued from Page One) Washburn continued in similar vein when taken before Magistrate Louis A. Pagnucco in Tolony Court.

LEGAL BEVERAGES AT LOW PRICES. Arthur Drug Stores. HOURS 8 A.M. TO 11 P.M.

MANCHESTER WALLPAPER AND PAINT COMPANY. D. E. FRECHETTE, Prop. 549 Broad St. Tel. MI-6-9261

75 years ago, a tiny light marked the dawn of a new era. Only a fragile globe... but designed to change the world!

THE CONNECTICUT POWER COMPANY. Electricity is the most important servant in the home.

THE CONNECTICUT POWER COMPANY. Electricity is the most important servant in the home.

Former Resident Honored For Race Relations Work. A former Manchester resident, Dunbar, a United States representative to the United Nations...

COOKED GARIBAGE. Peabody Mass. (F) - Owners of the city's pig population (the latest official registration was over 4,000) must cook all garbage...

MANCHESTER WALLPAPER AND PAINT COMPANY. D. E. FRECHETTE, Prop. 549 Broad St. Tel. MI-6-9261

LEGAL BEVERAGES AT LOW PRICES. Arthur Drug Stores. HOURS 8 A.M. TO 11 P.M.

75 years ago, a tiny light marked the dawn of a new era. Only a fragile globe... but designed to change the world!

THE CONNECTICUT POWER COMPANY. Electricity is the most important servant in the home.

THE CONNECTICUT POWER COMPANY. Electricity is the most important servant in the home.

Charles W. Lathrop AUTOMOBILE INSURANCE. We Have Your Money Low Cost Mortgage LOANS.

WASHER REPAIRS. Prompt, Economical Guaranteed. Winger-Rolls Replaced. Potterton's 128 Center St., Cor. of Church.

LET US FILL YOUR Prescriptions. Called for and delivered promptly at no extra charge. PINE PHARMACY CALL MI-9-914

MANCHESTER WALLPAPER AND PAINT COMPANY. D. E. FRECHETTE, Prop. 549 Broad St. Tel. MI-6-9261

LEGAL BEVERAGES AT LOW PRICES. Arthur Drug Stores. HOURS 8 A.M. TO 11 P.M.

75 years ago, a tiny light marked the dawn of a new era. Only a fragile globe... but designed to change the world!

THE CONNECTICUT POWER COMPANY. Electricity is the most important servant in the home.

Midgets in First Wrestling Show at Armory

Barthel Must Wait Until June Before Running Against Santee

New York (NEA)—Joe Barthel's time in the Wampanoag Mile 4:07.5 was rather disappointing to the 15,000 fans who jam-packed Madison Square Garden.

Banner Crowd Attends Entertaining Program

By EARL YOST

No dogs were barred in last night's first wrestling show at the State Armory between the midgets and as a result a capacity crowd filled the main street building during the progress of the little guys.

Maldon Visit to a Dog Show

Can Be Both Interesting, Rewarding Scribe Learns

By GAYLE TALBOT

Commissioner Approves First Manchester Wrestling Card

State Athletic Commissioner Frank Carlsbach, above on the right, is shown approving the wrestling card scheduled last night at the Armory.

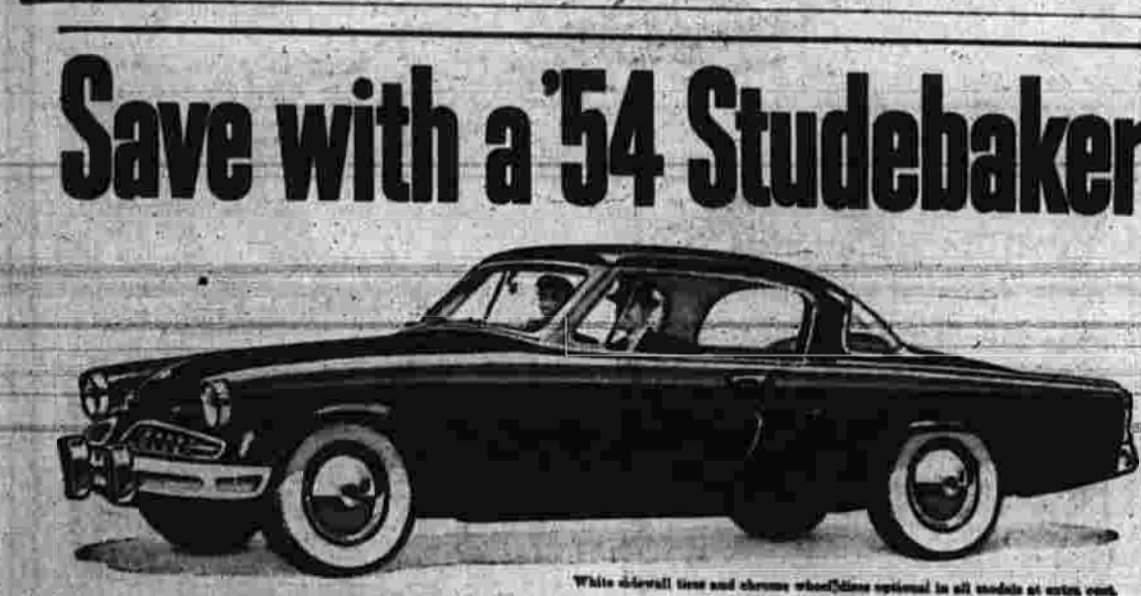
Clamor Today for Boxing Rematch Between Vejar-Black After Draw

Chicago, Feb. 11 (AP)—There was a clamoring today for a rematch between Chico Vejar and Eddie Black, scrappy young welterweights who made a smash hit in a bruising 10-round draw at Chicago Stadium last night.

Stiff Wind Halts Laundry Mile Bid

Sydney, Australia, Feb. 11 (AP)—The high wind which has been blowing from the west since last night has been a stiff head wind for the laundry mile bid.

Save with a Studebaker



GET AHEAD OF THE PARADE... GET MORE WHEN YOU TRADE

REFeree

Q. What is the best way to take the best of your job as a referee?
A. The best way to take the best of your job as a referee is to be fair, impartial, and to have the respect of the fighters.

CHORCHES MOTOR SALES

60 OAKLAND STREET - MANCHESTER

Earn While You Learn

THE ATLANTIC REFINING COMPANY has a school designed to train men capable of earning \$10,000 a year and up, operating modern service stations.

Baltimore Orioles Run Wild as Sunoco Edge Pioneer

Drop in 35 Tallies In 72 to 69 Success

Pagan's Chips in with 25 Points as Fifth Place Club Triumphs; Queys Score Victory

Ponticello Back Into Tie for Lead

Jimmy Piersall, sensational defensive outfielder of the Boston Red Sox, was in town yesterday to attend to the affairs of the Boston Red Sox.

EMERGENCY OIL BURNER SERVICE

CALL MI-9-4548 WILLIAMS OIL SERVICE

Nine Entries In Dog Show

Nine dogs and handlers from the Manchester Obedience Club have entered in the Governor's Post Class Show in Hartford Saturday.

Undefeated Duquesne Accepts Tourney Bid

Dukes Win Handily over Carnegie Tech; Dayton Yale NIT Hopfuls; Among UP's Indians

Collier Appointed Kentucky Coach

Lexington, Ky., Feb. 11 (AP)—Native son Blanton Collier, Kentucky's first coach, has been named to succeed Coach J. V. Rife as head coach of the University of Kentucky.

ALL-CHANNEL UHF-VHF TELEVISION RECEPTION

Raytheon

ONE-KNOB CONTROL exclusive with Raytheon

CLEANING AND INSTALLING SEPTIC TANKS AND CESSPOOLS

Call MCKINNEY BROS.

SEWAGE DISPOSAL COMPANY

BANTLY OIL CO. INC.

331 MAIN STREET, MANCHESTER, CONN. TEL. MI-9-4595 or ROCKVILLE 5-2177

